

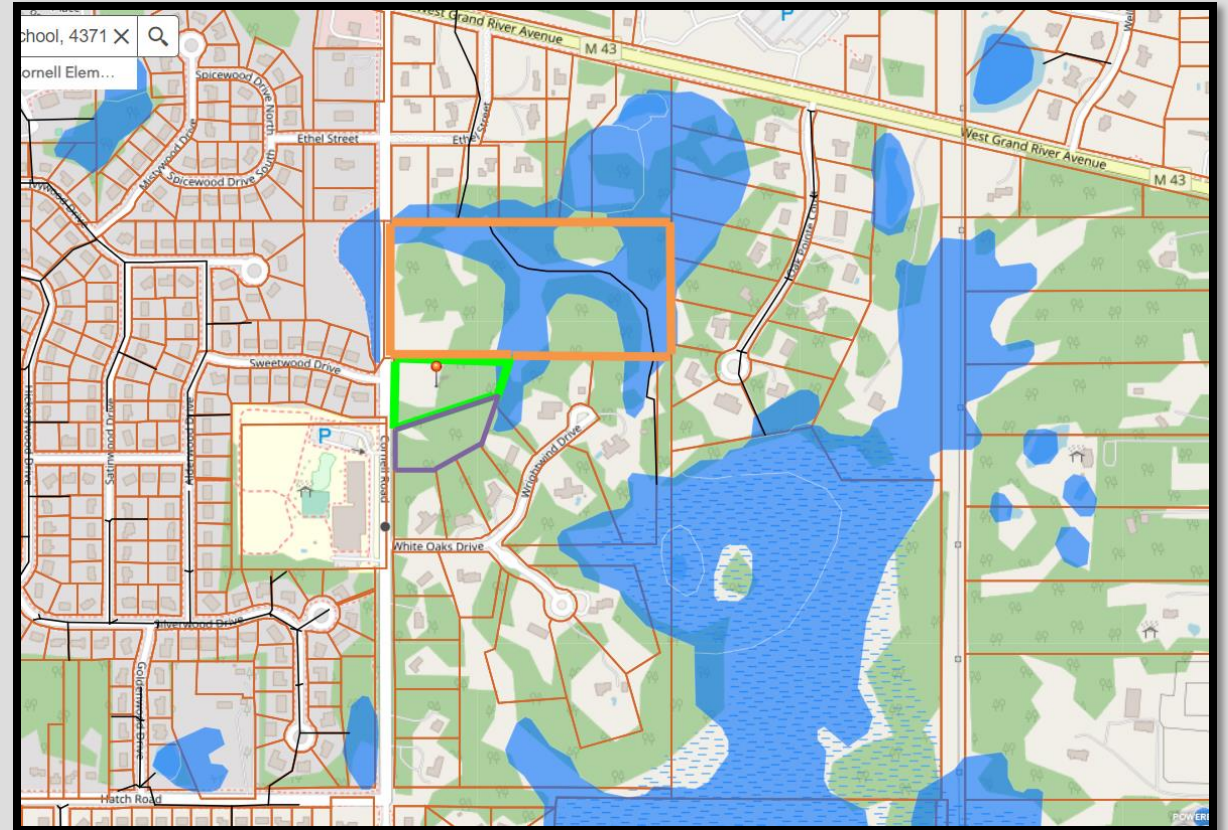
CORNELL-SWEETWOOD ACQUISITION

Land Preservation Advisory Board Recommendation

Action Item 12.E

BACKGROUND ON PARCEL

1. Parcel ID: 26-202-001
2. Acreage: 2.71
3. Neighborhood recommendation for Land Preservation program in March of 2022
4. Parcel location: Grand River Avenue located to the North, Hatch Road to the South, Sweetwood Drive dead-ends into parcel
 1. Parcel directly to the North is 30 acres of drain relief (ICD)
 2. Parcel directly to South is a private property that was pursued by the LPAB with no response



- LPAB reviewed site for ecological value in June 22'
- Official appraisal price: **\$62,000**
 - Highest and best use determined in appraisal: **Single family residential development**
- Phase I Environmental Site Assessment (ESA) completed with **no environmental (contamination/conditions) concerns** except for one discarded tire on the site
- Property owners have agreed to negotiations pending approval from Township Board & Planning Commission
- Planning Commission approved Section 61 Review at May 23' meeting



LOOKING FORWARD

- Since the Land Preservation Program started in 2000, the focus was acquisition of preservation land to guarantee green space for future generations
- Management and stewardship of land preserves has been the main focus since 2018
 - Preservation budget since 2020 has been utilized more for contractual invasive species management & habitat restoration
- In 2020 the Meridian Conservation Corps was established to initiate community conservation in parks and preserves
 - Our smaller preserves benefit highly from the Corps and can be managed efficiently at a low cost, while connecting the community with our Township lands

