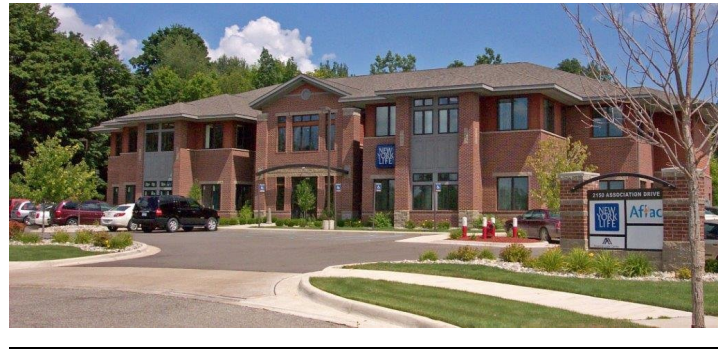


Association Drive - 2150

2150 Association Dr, Okemos, MI 48864



Listing ID: 30151360
Status: Active
Property Type: Office For Lease
Office Type: Office Building
Contiguous Space: 2,343 SF
Total Available: 2,343 SF
Lease Rate: \$18.50 PSF (Annual)
Base Monthly Rent: \$3,612
Lease Type: Modified Gross

Overview/Comments

- *Suite 150 – 5,362 sq. ft. available for lease
- *21,772 sq. ft. class A, two-story building
- *Spacious well appointed main entry lobby and suite finishes
- *Wooded views from each office
- *Well landscaped site with ample free on-site parking
- *Nearby restaurants, banks and other interchange services
- *Immediate access to I-96
- ** Plus utilities & janitorial

More Information Online

<https://www.catylist.com//listing/30151360>



QR Code

Scan this image with your mobile device:

General Information

Tax ID/APN:	02-02-33-453-004	Class of Space:	Class A
Office Type:	Office Building	Gross Building Area:	21,772 SF
Zoning:	PROFESSIONAL OFFICE	Building/Unit Size (RSF):	9,278 SF

Available Space

Suite/Unit Number:	100	Space Type:	Relet
Suite Floor/Level:	1st floor	Date Available:	03/01/2018
Space Available:	2,343 SF	Lease Rate:	\$18.50 PSF (Annual)
Minimum Divisible:	2,343 SF	Lease Type:	Modified Gross
Maximum Contiguous:	2,343 SF	Parking Spaces:	0
Space Description:	Nicely appointed suite Excellent floor plan		

Area & Location

Market Type:	Small	Property Visibility:	Excellent
Property Located Between:	On Association Dr, just east of Okemos Rd	Transportation:	Bus, Highway, Taxi, Other
Road Type:	Paved	Highway Access:	Okemos Rd. and I-96 interchange

Building Related

Total Number of Buildings:	1	Construction/Siding:	Brick
Number of Stories:	2	Parking Type:	Surface
Typical SF / Floor:	10,886 SF	Total Parking Spaces:	99
Year Built:	2007	Heat Type:	Natural Gas
Roof Type:	Gable	Heat Source:	Central

Land Related

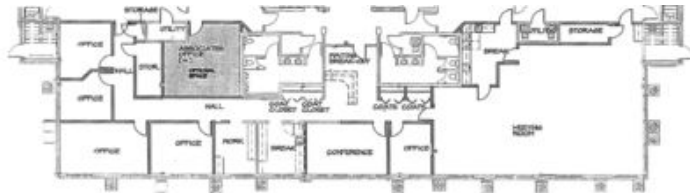
Water Service:	Municipal
Sewer Type:	Municipal

Location

Address: 2150 Association Dr, Okemos, MI 48864
County: Ingham
MSA: Lansing-East Lansing



Property Images



2150_150

Property Contacts



Jeff Shapiro

NAI Mid-Michigan/TMN Commercial
517-881-4390 [M]
517-487-9222 [O]
jeffshapiro@naimidmichigan.com